

## What is the Flat Bed Verifier?

The Flat Bed Verifier is designed to ISO grade most 1D & 2D bar codes on various label sizes and finished products with flat or rounded sides. The Flat Bed Verifier Boasts a massive 6" x 4" Field of View on the optional High Density unit (Part No.: AUXRH-HD-6.25).

The LVS Flat Bed Verifier is connected to a customer supplied PC via a USB cable and is designed to fully comply with the ISO/IEC Standards. Place a bar code on the viewing stage and software does the rest. A NIST Traceable Calibrated Conformance test card is used for calibration.

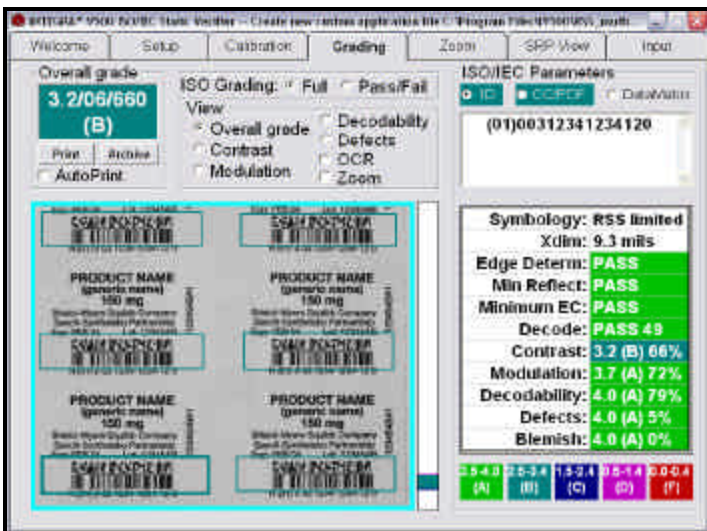
## Designed for Different Applications

There are five different models. Each designed to accommodate your needs for a different field of view with respect to the Narrow Bar Width (NBW) or cell size.

Model	Max BC Width	NBW - Cell	
		1D	2D
AUXRH-STD-2.50	63.5mm (2.5")	5.4 mil	7.5mil
AUXRH-HD-2.75	70mm (2.75")	4.3mil	6.0mil
AUXRH-HD-4.50	114mm (4.5")	7.0mil	9.8mil
AUXRH-HD-5.50	140mm (5.5")	8.6mil	12.0mil
AUXRH-HD-6.25	158mm (6.25")	9.8mil	13.7mil

## The Flat Bed Verifier Package

Flat Bed Verification unit includes, INTEGRA 9500 software bundle with security dongle, GS1 Calibration card, USB Cable, INTEGRA 9500 Software Manual.



## Warranty

Label Vision Systems, Inc. is pleased to offer a full one year Return to Base warranty on all labor and materials for LVS products.

Label Vision Systems will provide telephone support (5) five days a week 9 a.m. to 4 p.m. EST.

## Camera

Monochrome Camera  
2.1 Mega-pixel or 1.3 Mega-pixel

## Light Source

White light  
Narrow band pass interference filter  
12 vdc @ 1.6 A

## Inputs / Outputs

USB 2.0 port  
12 vdc @ 1.6 A

## Operating Temperature

10° C (50°F) to 30° C (86°F)

## Relative Humidity

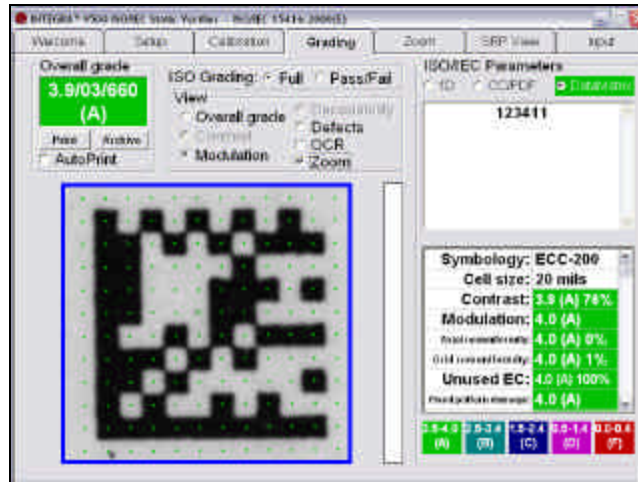
20% to 70% (non condensing)

## Storage Temperature

0° C (32°F) to 40° C (104°F)

## Physical Properties

D = 432mm (17in)  
W = 324mm (12.75in)  
H = 463mm (18.25in)  
Weight = 12.5 kg (27.5lbs)



## Supported Symbolologies

Code 39  
ITF (1 of 5)  
UCC/EAN-128  
Code 128  
Codabar  
UPC-A  
Code 93  
UPC-E  
EAN-8  
EAN-13  
GS1 DataBar Omnidirectional  
GS1 DataBar Stacked Omnidirectional  
GS1 DataBar Limited  
GS1 DataBar Expanded  
GS1 DataBar Truncated  
GS1 DataBar Stacked  
GS1 DataBar Expanded Stacked  
PDF 417  
MSI Plessey  
MicroPDF 417  
Laetus Pharmacode  
Composite Code CC-A  
Composite Code CC-B  
Composite Code CC-C  
DataMatrix (ECC-200)

## Supported Standards

### CONFORMANCE STANDARDS:

ISO/IEC 15415:2000(E)  
ISO/IEC 15416:2000(E)  
ISO/IEC 15426-1:2000(E)  
ISO/IEC 15426-2:2004(E)

### APPLICATION STANDARDS:

GS1 General Specifications  
MIL-STD-130M  
AS9132-A /AIM DPM Cat 0  
Laetus Pharmacode  
Laetus Standard  
Laetus Miniature Pharmacode  
ISO/IEC 15415/15416  
DHL  
ALDI  
PZN (big, normal, small)  
MultiRotation Data Matrix  
GS1 Report  
Italian Pharmacode

## PC Requirements

Minimum PC Requirements:  
Windows XP Professional  
Intel Celeron 2.4 Ghz  
512 MB RAM (1GIG recommended)  
40 GB HDD  
800x600 resolution  
USB 2.0 (2)